

# What's On

## Jan — Mar 2019

**Free Entry,  
Please Donate**

Graves Gallery  
Millennium Gallery  
Weston Park Museum

Find out more at  
[museums-sheffield.org.uk](http://museums-sheffield.org.uk)

MuseumSheffield



# Coming up this winter – Leonardo da Vinci, a dazzling digital installation and brand new cafés at Millennium Gallery and Weston Park Museum.

Museums Sheffield is the charity that runs Millennium Gallery, Graves Gallery and Weston Park Museum.

For our full programme and more details, visit [museums-sheffield.org.uk](https://museums-sheffield.org.uk)

Stay up-to-date with what's coming up.

Sign up for our regular e-newsletter and get the latest news on all our exhibitions and events direct to your inbox.

Subscribe at [museums-sheffield.org.uk/mail](https://museums-sheffield.org.uk/mail)

## Leonardo da Vinci: A Life in Drawing

1 Feb – 6 May 2019  
Millennium Gallery

Leonardo da Vinci was arguably the greatest artist that ever lived. This spring, 12 of his most extraordinary drawings will go on display in Sheffield as part of a major nationwide exhibition marking the 500<sup>th</sup> anniversary of his death.

With much of his life's work unrealised or destroyed, many of Leonardo's greatest achievements are represented through his drawings. An unprecedented national event, *Leonardo da Vinci: A Life in Drawing* will see works from the Royal Collection illustrate the great Renaissance master's unparalleled gift as an artist, draftsman and scientist.

Amongst the works on display in Sheffield is *The head of St Philip* (c.1495), a study for one of the world's most famous paintings, the *Last Supper*. The exhibition will also feature examples of Leonardo's celebrated anatomical drawings, his observations of the movement of water, and more.

Visitors will have the chance to try some of Leonardo's techniques themselves in a range of hands-on drawing activities for the whole family. See our website for full programme of *Inspired by Leonardo* talks, workshops and events.



Headline Sponsor:

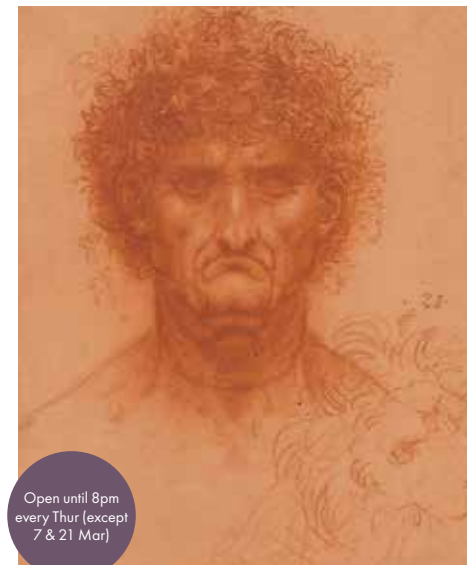
**ARUP**

Associate Sponsor:

**C/M/S'**  
Law, Tax

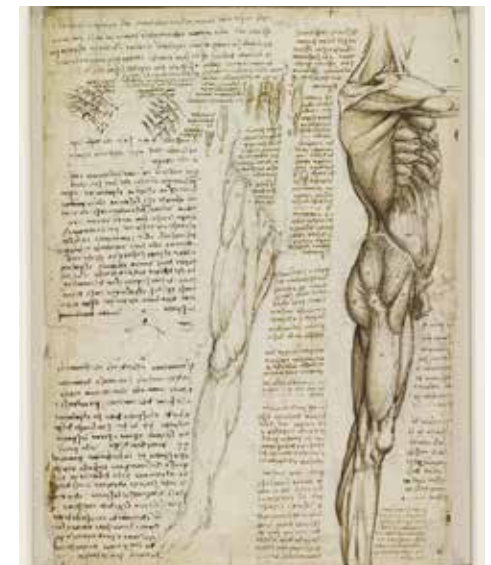
Supported by:

**CONSTANTINE**

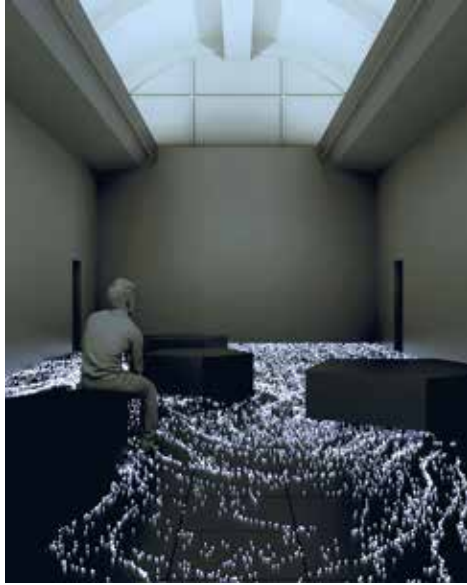


Open until 8pm  
every Thur (except  
7 & 21 Mar)

Leonardo da Vinci, *The bust of a man*, c.1510. Royal Collection Trust/  
© Her Majesty Queen Elizabeth II 2018



Leonardo da Vinci, *The muscles of the trunk and leg*, c.1510-11.  
Royal Collection Trust/© Her Majesty Queen Elizabeth II 2018



Universal Everything, *The Vehicle of Nature* (work in progress)  
© Universal Everything

## The Vehicle of Nature by Universal Everything

19 Jan–26 May 2019  
Millennium Gallery

The genius of Leonardo da Vinci provides the inspiration for an immersive experience from internationally-acclaimed digital studio, Universal Everything.

This new installation is a 21<sup>st</sup> century response to the artist's ground-breaking *Studies of flowing water* (1510-13), on display in *Leonardo da Vinci: A Life in Drawing*. Centuries before the advent of photography, these drawings revealed the complexity of fluid movement in a way never seen before. *The Vehicle of Nature*, named after Leonardo's own description of water, brings together the latest display technologies to create a digital river, which swirls and eddies across the gallery space.

Based in Sheffield, Universal Everything have collaborated with some of the world's leading digital innovators, from Apple, Google and MTV to the city's own Warp Records.



Wilhelmina Barns-Graham, *Glacier Painting, Green and Brown*, 1951.  
Image © Wilhelmina Barns-Graham Trust

## Wilhelmina Barns-Graham: Sea, Rock, Earth and Ice

Until 16 Mar 2019  
Graves Gallery

*Sea, Rock, Earth and Ice* celebrates Wilhelmina Barns-Graham's remarkable gift for capturing the spirit of the world's wildest landscapes.

Spanning four decades, the paintings and works on paper on display showcase Barns-Graham's extraordinary ability to evoke a landscape in gradual flux, from eroding coastlines and volcanic vistas to the unseen slow creep of a glacier.



Martin Jenkinson, Maxine Duffus, South Yorkshire Passenger Transport's first black woman bus driver. Herries Road bus garage, Sheffield. 18/11/1983  
© Martin Jenkinson Photo Library / pressphotos.co.uk

## Who We Are: Photographs by Martin Jenkinson

Until 14 April 2019  
Weston Park Museum

For over four decades Sheffield-based photojournalist Martin Jenkinson chronicled the drama and detail of our everyday lives.

Jenkinson became known for his front page images of British protests, but his wider work was no less powerful. Each of the images he created was a candid insight into the communities we're part of and the experiences we share.

*Who We Are* is the first major retrospective of Jenkinson's work.

## Latest News



Public, Observer Food Monthly's Best Place to Drink 2018.  
Photo: India Hobson.

### Welcome to Ambulo!

The team behind the award-winning Public are joining Arctic Monkey's Matt Helders and Museums Sheffield to launch Ambulo, a brand new all-day café concept.

The new cafés at the Millennium Gallery and Weston Park Museum are being created by James O'Hara and James Hill, who also run Picture House Social and The Great Gatsby. Open from 8am with a keen focus on families, they'll serve specialty coffee, fresh pressed juices, smoothies alongside an eclectic food menu. At the Millennium Gallery, Ambulo will continue to serve into the evening with a seasonal menu and a great range of wine, beer and cocktails.

Ambulo opens at Millennium Gallery in early Feb and at Weston Park Museum in early spring 2019 – keep an eye on our website for more info coming soon.

## Jan 2019

**Evening Talk:  
The Geometry of Fear**  
Thu 10 Jan, 6–7.30pm  
Millennium Gallery  
Free, please book in advance

**Curator Talk:  
Women and Photography**  
Thu 17 Jan, 1–1.45pm  
Graves Gallery  
Free, donations welcome,  
just turn up

**Sheffield Heritage Fair**  
Sat 19 Jan, 10am–5pm  
Sun 20 Jan, 11am–4pm  
Millennium Gallery  
Free, donations welcome,  
just turn up

**Death Café**  
Tue 29 Jan, 12–2pm  
Millennium Gallery  
£3 recommended donation,  
Please book in advance

## Feb 2019

**Inspired by Leonardo  
Evening Talk: The Universe  
of Leonardo in Twelve  
Drawings with Martin Kemp**  
Wed 13 Feb, 6.30–8pm  
Millennium Gallery  
£5, please book in advance

**Inspired by Leonardo  
Workshop: Oil Painting**  
Sat 23 Feb, 10.30am–4.30pm  
Millennium Gallery  
£35, please book in advance

**Film Screening: Dino Week**  
The Land Before Time, 5pm  
Jurassic World: Fallen Kingdom,  
7.30pm, Sun 24 Feb  
Weston Park Museum  
£6, please book in advance

**Inspired by Leonardo  
Evening Talk:  
The Illusions of Leonardo**  
Tue 26 Feb, 6.30–8pm  
Millennium Gallery  
£5, please book in advance

**Artist Talk:  
Linda Benedict-Jones**  
Thu 28 Feb, 6pm  
Millennium Gallery  
£5, please book in advance

**Workshop: Pastels Explained  
with Brian Smith**  
Mon 11 Feb, 10.30am–4.30pm  
Millennium Gallery  
£35, please book in advance

## Mar 2019

**Inspired by Leonardo  
Talking Life, Talking Art**  
Wed 6 Mar, 2–3pm  
Millennium Gallery  
Free, just turn up

**LATE: International  
Women's Day**  
Fri 8 Mar, 7.30–10.30pm  
Millennium Gallery  
Free, recommended donation £5

**Performance: Classical  
Weekend 2019  
Feedback Loops –  
Art and Music**  
Sat 9 Mar, 11.40am–12.30pm  
& 2–2.50pm  
Graves Gallery  
Free, advance booking essential

## Mar 2019

**Ruskin in Sheffield Lunchtime  
Talk: Ruskin & Park Centre  
Community Garden**  
Mon 11 Mar, 1–1.45pm  
Millennium Gallery  
Free, just turn up

**Inspired by Leonardo  
Evening Talk: Leonardo  
– A Life, Drawing**  
Thu 14 Mar, 6.30–8pm  
Millennium Gallery  
£5, please book in advance

**Inspired by Leonardo  
Lunchtime Talk: Leonardo**  
Fri 15 Mar, 1–1.45pm  
Millennium Gallery  
Free, just turn up

**Inspired by Leonardo  
Workshop: Representational  
Life Drawing**  
Sat 16 Mar, 10.30am–4.30pm  
Millennium Gallery  
£40, please book in advance

**Inspired by Leonardo  
PechaKucha Sheffield  
Vol#29 – 'Ingenious'**  
Thu 28 Mar, 7.30–10.45pm  
Millennium Gallery  
£6/£9, plus booking fee  
Please book in advance

**Spring Craft Market**  
Sat 30 Mar, 10am–5pm  
Millennium Gallery  
Free, recommended donation £1

## Adult Regular Sessions

**Craft Club**  
Every Monday, excluding school  
holidays, 10.30am–12.30pm,  
Millennium Gallery  
Free, just turn up

**The Graves Art Club**  
Every Thursday, excluding school  
holidays, 11am–1pm  
Graves Gallery  
£6, pay in the shop on the day

**Talking Life, Talking Art**  
16 Jan, 13 Feb & 13 Mar, 2–3pm  
Graves Gallery  
Free, just turn up

**Life Drawing**  
Every Friday, excluding school  
holidays, 10.30am–12.30pm  
Millennium Gallery  
£8, pay in the shop on the day

**Dementia Friendly  
Museums Cafés**  
Tue 15 Jan, Millennium Gallery  
Tue 12 Feb, Kelham Island Museum  
Tue 12 Mar, Weston Park Museum  
1.30–3.30pm  
Free, just turn up

## How to Book

**Book online via: [museums-sheffield.org.uk/shop](https://museums-sheffield.org.uk/shop),  
call 0114 278 2647 or email:  
[events@museums-sheffield.org.uk](mailto:events@museums-sheffield.org.uk)**

For details of our full events programme visit:  
[museums-sheffield.org.uk](https://museums-sheffield.org.uk)

Donations at our free events help support work  
across our museums and galleries.



### Millennium Gallery

Arundel Gate  
Sheffield, S1 2PP

Open every day  
Mon-Sat 10am-5pm  
Sun 11am-4pm  
Bank Holidays 11am-4pm



### Graves Gallery

Surrey Street  
Sheffield, S1 1XZ  
(Above the Central Library)

Open Tue-Sat  
11am-4pm (Weds 1-6pm)  
Closed Bank Holidays



### Weston Park Museum

Western Bank  
Sheffield, S10 2TP

Open every day  
Mon-Sat 10am-5pm  
Sun 11am-4pm  
Bank Holidays 10am-5pm



### Discounted Parking with Q-Park

Travelling by car? Ask a member of staff for our discount voucher and get money off your parking at the Q-Parks on Charles Street and Durham Road.

### Contact Museums Sheffield

Call 0114 278 2600 or email  
info@museums-sheffield.org.uk

This leaflet is available in large type format – please call us to request a copy or ask at our museums.

### Join our Friends

Support our work across the city by becoming a Friend and receive invitations to exclusive events and discounts in our shops and cafés. For more info call the Friends office on 0114 278 2610.

### Hire our spaces

Our flexible spaces provide a unique setting for your event or celebration. To find out more, call 0114 278 2715 or email [hospitality@museums-sheffield.org.uk](mailto:hospitality@museums-sheffield.org.uk)

### Principal funders

Museums Sheffield thanks our major funders Sheffield City Council and Arts Council England.

### Partners

V&A have been working in partnership with Museums Sheffield since 1999.

### We support

Our Favourite Places, Sheffield's Culture Guide. [ourfaveplaces.co.uk](http://ourfaveplaces.co.uk)

---

**Help keep our museums  
and galleries free and open  
for everyone to enjoy.  
Text SHEF003 to 70970  
to donate £5 today.**

Museums Sheffield is a registered charity  
no.1068850

Find us on:



Cover image:  
The head of St Philip (c.1495), Royal  
Collection Trust / © Her Majesty Queen  
Elizabeth II 2018