

What's On

Apr — Jun 2018

**Free Entry,
Please Donate**

Graves Gallery
Millennium Gallery
Weston Park Museum

**Find out more at
museums-sheffield.org.uk**

MuseumSheffield



Museums Sheffield is the charity that runs Millennium Gallery, Graves Gallery and Weston Park Museum. Coming up this spring – the giants of Victorian photography, a unique archive of world-class artists, our Protest season continues and more.

For our full programme and more details, visit museums-sheffield.org.uk

Stay up-to-date with what's coming up.

Sign up for our regular e-newsletter and get the latest news on all our exhibitions and events direct to your inbox.

Subscribe at museums-sheffield.org.uk/mail



Julia Margaret Cameron, Mountain Nymph, Sweet Liberty, 1866. Image © National Portrait Gallery



Lewis Carroll, Alice Liddell, 1858. Image © National Portrait Gallery

Victorian Giants: The Birth of Art Photography

30 Jun – 23 Sep 2018
Millennium Gallery

This major new exhibition on tour direct from the National Portrait Gallery brings together the works of four of the most celebrated figures in art photography, Lewis Carroll, Julia Margaret Cameron, Oscar Rejlander, and Clementina Hawarden.

These four artists would come to embody the very best in photography of the Victorian era. Their experimental approach to picture-making and radical attitudes towards photography have informed artistic practice ever since.

Victorian Giants is the first exhibition to examine the relationship between these four ground-breaking artists. Drawn from public and private collections internationally, it features some of the most breath-taking images in photographic history, including many which have not been seen in Britain since they were made.

Discover striking portraits of celebrated sitters, including Charles Darwin, Alice Liddell, Dante Gabriel Rossetti, Thomas Carlyle, George Frederic Watts, Ellen Terry and Alfred, Lord Tennyson.

Reviews of *Victorian Giants* at the National Portrait Gallery:

'The jewel-like exhibition is excellent'
***** **The Telegraph**

***** **The Guardian**

National
Portrait
Gallery



Roy Lichtenstein, Hat, 1968 © Estate of Roy Lichtenstein/DACS 2018
The SMS portfolio has been loaned to Museums Sheffield by Martin Hinchliffe. The exhibition has been supported by MM Design Ltd.

Received Dissent: An American Mail Art Project

3 Apr–28 Jul 2018
Graves Gallery

In 1968, William Copley, a New York artist disillusioned by the restrictions of the art world, envisaged a new way of connecting artists' work with the public. Copley's idea was to send artworks directly to subscribers through the post. This subscription, the SMS portfolio, brought together work by some of the most important artists of the 20th century.

This new exhibition marks the 50th anniversary of the SMS portfolio's creation and the first time the portfolio has been shown in its entirety in the UK. Visitors will discover works by Marcel Duchamp, Roy Lichtenstein, Man Ray, Yoko Ono, Richard Hamilton and many more.



Anti-Apartheid stickers, 1980s. Photo © Museums Sheffield

Changing Lives: 200 Years of People and Protest in Sheffield

Until 1 Jul 2018
Weston Park Museum

In 1918 the women's suffrage movement successfully led to the passing of the Representation of the People Act, the first step in a major electoral reform that would extend voting rights to 8.5 million women across the UK.

To mark the anniversary of this landmark development in British democracy, *Changing Lives* celebrates how the people of Sheffield have stood up for what they believe in over the past 200 years.

Explore Sheffield's remarkable history of protest and activism, from the Radical Press of the 1700s, through to the miners' and steelworkers' strikes, and causes championed in the city today.



Sean Scully, Ghost, 2018 © the artist



Hope is Strong

Until 10 Jun 2018
Millennium Gallery

With far right parties and hate crimes on the rise, civil liberties and minority rights seem more at risk today than we could have imagined. In these turbulent times, *Hope is Strong* explores the power of art to question the world we live in.

See work by one of the world's foremost politically motivated artists, Ai Weiwei, alongside Jeremy Deller's *The Battle of Orgreave Archive (An Injury to One is an Injury to All)*, chronicling the confrontations between police and striking miners in South Yorkshire.

Hope is Strong also features work by Conroy/Sanderson, Ashley Cook, Kate Davis, Ruth Ewan, Jamie Fitzpatrick, flyingleaps, Mona Hatoum, Sharon Kivland, Goshka Macuga, Ciara Phillips, Keith Piper, Olivia Plender, Hester Reeve, Sean Scully and Artur Zmijewski.



Conroy/Sanderson, Here I am, video still © Conroy/Sanderson



Part of Making Ways, a new programme funded by Arts Council England to showcase, celebrate and develop the exceptional contemporary visual art produced in Sheffield.

Conroy/Sanderson: Here I am

Until 20 May 2018
Millennium Gallery

Here I am is an exhibition of new work by Sheffield-based artists Neil Conroy and Lesley Sanderson marking twenty years of their collaboration as Conroy/Sanderson.

Through video, drawing, neon and large-scale sculptural work, the exhibition offers a timely exploration of ideas of place and displacement. Performative physical interventions in the landscape go on display alongside images that confound traditional expectations of portraiture, as the artists combine suggestions of fragility, menace and balance to evoke a sense of other worldliness and the uncanny.

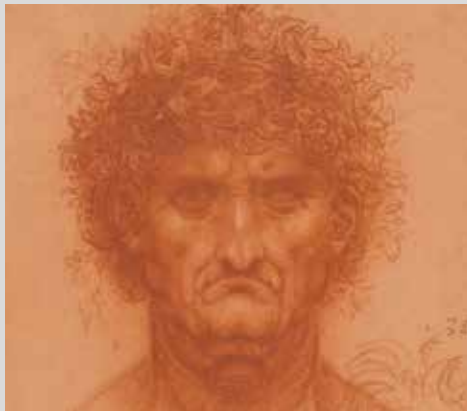
Latest News

Leonardo da Vinci drawings from the Royal Collection to go on display in Sheffield in 2019

Twelve remarkable drawings by Leonardo da Vinci from the Royal Collection are set to go on display at Millennium Gallery in February 2019 as part of major nationwide exhibition marking the 500th anniversary of the artist's death. *Leonardo da Vinci: A Life in Drawing* will see some of the Renaissance master's greatest drawings shown in a series of simultaneous exhibitions taking place in 12 UK cities.

Leonardo da Vinci: A Life in Drawing will give the widest-ever UK audience the opportunity to see the work of this extraordinary artist. Twelve drawings, selected to reflect the diversity of Leonardo's interests – painting, sculpture, architecture, music, anatomy, engineering, cartography, geology and botany – will be shown at each venue in Belfast, Birmingham, Bristol, Cardiff, Derby, Glasgow, Leeds, Liverpool, Manchester, Sheffield, Southampton and Sunderland.

Look out for more details coming later in the year.



Leonardo da Vinci, The bust of a man (c.1510), Royal Collection Trust © Her Majesty Queen Elizabeth II 2018

Coming Soon: Great Northern Contemporary Craft Fair Sheffield

The multi-award winning Great Northern Contemporary Craft Fair in Manchester has established itself as one of the leading selling events in the UK featuring some of the country's top designer makers.

This year the Great Northern Contemporary Craft Fair will also cross the Pennines to make its Sheffield debut at the Millennium Gallery. Taking place from 27-29 July 2018, the event will bring together 75 specially selected artists and craftspeople.

Local makers are set to be well-represented in the Great Northern Contemporary Craft Fair Sheffield, which forms part of *Making Ways*, a three-year programme funded by Arts Council England to showcase, celebrate and develop the exceptional contemporary visual art produced in the city.

For more info, visit greatnorthernevents.co.uk



Meghan Downs, Sheffield Collection Boxes. Photo © the artist

Support Museums Sheffield – Become our Friend



Get closer to Museums Sheffield... Join Museums Sheffield Friends Circle

Since 2000, our Friends have supported Sheffield's museums and galleries, raising funds to help us care for the city's historic collections and inspire visitors with a diverse programme of exhibitions and events.

Last year, we launched our new Friends Circle membership option which allows you to get even closer to the work we do, the collections we care for, and the artists and experts we collaborate with.

As a thank you for their generosity, Friends Circle members enjoy all Friends benefits, plus:

- Invitations to exclusive events with our Chief Executive, Trustees, curators and artists
- Unique 'behind-the-scenes' experiences, such as viewing an exhibition installation
- Invitations to Private View events for exhibitions
- Acknowledgment on our website and in our annual report

Each Friends Circle membership makes a vital difference to our work as a charity. From as little as £25 per month, you can help to keep the museums and galleries you love free and open for everyone.

To join the Friends Circle and become a part of a lively social circle of like-minded enthusiasts, visit museums-sheffield.org.uk or call Mel Russell at the Friends office on 0114 278 2610.

Apr 2018

WWI Centenary: Film Screening: *Asunder*

Wed 11 Apr, 6.30pm
Weston Park Museum
Free, please book in advance

Painting in Focus: *Footsteps (1955)* by Peter Blake

Fri 13 Apr, 1-1.45pm
Graves Gallery,
Free, just turn up

Lunchtime Talk: *Received Dissent – Image and Text in the SMS Portfolio*

Thu 19 Apr, 1-1.45pm
Graves Gallery
Free, just turn up

Protest Season Workshop: *Changing Lives – Words of Protest*

Sat 21 Apr, 11am-1pm
Weston Park Museum
£20, book in advance

Performance: *Concerteenies / Folk Forest*

Sun 22 Apr, 1.30pm & 2.45pm
Millennium Gallery
£7 per adult, £12 for 2 adults
(children free)
Please see website for details

Nature Walk: *Dragonflies at Potteric Carr*

Sat 28 Apr, 11am
Meet at Potteric Carr Visitor Centre
Free, please book in advance

Protest Season Workshop: *Singing for Change*

Sat 28 Apr, 10am-4pm
Weston Park Museum
£15 / £13.50 concs /
£10 low income

May 2018

Lunchtime Talk: *Three Readings of Jean-Léon Gérôme's The Execution of Marshal Ney (1868)*

Thu 3 May, 1-1.45pm
Graves Gallery
Free, just turn up

Protest Season Protest: *Stories of Resistance*

Wed 9 May, 7-9.30pm
Millennium Gallery
£9/£7 concs, book in advance

Protest Season Poetry Workshop: *If We All Spit Together with Matt Abbott*

Sat 12 May, 10.30am-4pm
Millennium Gallery
£40, book in advance

Craft Market

Sat 12 May, 10am-4pm
Millennium Gallery
Free, just turn up

Lunchtime Talk: *Silversmiths at Yorkshire Artspace*

Mon 14 May, 1-1.45pm
Millennium Gallery
Free, just turn up

Curator Talk: *Cypriot Archaeology*

Tue 15 May, 1-1.45pm
Weston Park Museum
Free, just turn up

May 2018

Artist Talk: *Neil Conroy & Lesley Sanderson*

Thu 17 May, 1-1.45pm
Millennium Gallery
Free, just turn up

Live Art: *A Seat at the Table – Afternoon Tea the Sheffield Way*

Sun 20 May, 2-4pm
Millennium Gallery
Free, please book in advance

Protest Season Study Day: *Basque Children in Sheffield and the Spanish Civil War*

Wed 23 May, 10am-4pm
Weston Park Museum
Pay what you feel,
book in advance

Protest Season LIVE LATE: *DISSENT!*

Fri 25 May, 7.30-10.30pm
Graves Gallery
£10, book in advance

Protest Season Talk: *Mark Thomas – Creative Mayhem*

Sat 26 May, 2pm
Millennium Gallery
£10, book in advance

Lunchtime Talk: *Ceramics Makers at Yorkshire Artspace*

Wed 6 Jun, 1-1.45pm
Graves Gallery
Free, just turn up

Protest Season Film Screening: *Human*

Wed 6 Jun, 6.30-9.30pm
Millennium Gallery
Free, please book in advance

Protest Season Workshop: *Use Your Voice! Speaking Up, Speaking Out*

Sat 26 May, 2-5pm
Millennium Gallery
This workshop is aimed at anyone
who identifies as female aged
16-18
Free, please book in advance

Protest Season Our Mel presents: *Creativity, Activism & Social Change*

Tue 29 May, 7-9pm
Millennium Gallery
£8, please book in advance

WWI Centenary: Workshop & Performance: *No Petticoats Here*

Wed 30 May,
Workshop 1-3pm,
Performance 4-6pm
Millennium Gallery
£10 each for workshop or
performance, £18 for both
Please book in advance

Lunchtime Talk: *The SMS Portfolio – A Time Capsule of Artistic Expression from 1968*

Thu 31 May, 1-1.45pm
Graves Gallery
Free, just turn up

Jun 2018

Painting in Focus: *Helter Skelter (c1937)* by Stanley Spencer

Fri 8 Jun, 1-1.45pm
Graves Gallery,
Free, just turn up

Workshop: *An Introduction to Oil Painting*

Sat 9 Jun, 11am-1pm
Millennium Gallery
£35, please book in advance

Jun 2018

Protest Season

Tour: Ron Clayton – Radical History Walk

Sun 10 Jun, 1–2pm
Leaving from Millennium Gallery
£5, book in advance

Curator Talk: 'The Art of Scratch' – Ruskin and Engraving

Tue 12 Jun, 1–1.45pm
Graves Gallery
Free, just turn up

Lunchtime Talk: Ceramics Makers at Yorkshire Artspace

Mon 18 Jun, 1–1.45pm
Millennium Gallery
Free, just turn up

Curator Talk: Received Dissent – Interpretations of Selected Works from the SMS Portfolio

Wed 20 Jun, 1–1.45pm
Graves Gallery
Free, just turn up

Talking Life, Talking Art Evening Session

Wed 20 Jun, 6pm
Graves Gallery
£3, book in advance or just turn up

Nature Walk: Dragonflies at Woodhouse Washlands

Thu 28 Jun, 11am
Meet at the Nature Reserve entrance on Furnace Road
Free, book in advance

Adult Regular Sessions

Dementia-Friendly Café

Thu 7 Jun, 10.30am–12.30pm
Weston Park Museum
Free, just turn up

Talking Life, Talking Art

Wednesdays, 11 Apr,
16 May, 13 Jun, 2–3pm
Graves Gallery
Free, just turn up

Craft Club

Every Monday, excluding school holidays, 10.30am–12.30pm,
Millennium Gallery
Free, just turn up

The Graves Art Club

Every Thursday, excluding school holidays, 11am–1pm
Graves Gallery
£5, pay in the shop on the day

Life Drawing

Every Friday, excluding school holidays, 10.30am–12.30pm
Millennium Gallery
£8, pay in the shop on the day

How to Book

Book online via: museums-sheffield.org.uk/shop, call 0114 278 2647 or email: events@museums-sheffield.org.uk

For details of our full events programme visit: museums-sheffield.org.uk

Donations at our free events help support work across our museums and galleries.



Join us for the Victorian Giants Bistro Evening and Exhibition Launch

Wed 4 Jul, from 6pm

Join us at the Millennium Gallery as a special guest at the official launch of our major new National Portrait Gallery exhibition, *Victorian Giants*, followed by a delicious three-course dinner.

Our Victorian-inspired menu choices include Jerusalem artichoke soup, 'Swiney' Todd's slow roasted pork belly, ale battered haddock with hand cut chips, and Mrs Beeton's classic Victorian trifle. For our full menu visit museums-sheffield.org.uk/bistro

2 courses £16.95 / 3 courses £19.95

6pm Exhibition Launch
6.45–8.30pm Dinner served
(last orders 7.45pm)

Please book your table in advance with Alex on 0114 278 2715 or email museumsheffield@baxterstorey.com



Enjoy Afternoon Tea at the Millennium Gallery

Take time to enjoy a well-earned treat with family or friends this spring with a classic British high tea at the Millennium Gallery. Served everyday from 2 April, 1.30 to 3.30pm, our decadent Afternoon Tea includes your choice of tea from our tea menu, freshly-made sandwiches, fruit scones with clotted cream, and a range of mouth-watering mini cakes and pastries.

Afternoon Tea £10.99 per person

Make it extra special – Afternoon Tea with Prosecco – £12.99 per person
(available on Fridays, 1.30 to 3.30pm)

To book your table call 0114 278 2715

Our Sites

Millennium Gallery

Arundel Gate
Sheffield, S1 2PP

Opening hours:

Open every day

Mon-Sat 10am-5pm

Sun 11am-4pm

Bank Holidays 11am-4pm



Graves Gallery

Surrey Street
Sheffield, S1 1XZ
(Above the Central Library)

Opening hours:

Open Tue-Sat

11am-4pm (Weds 1-6pm)

Closed Bank Holidays

Closed Easter Weekend

(30 Mar-3 Apr)



Weston Park Museum

Western Bank
Sheffield, S10 2TP

Opening hours:

Mon-Sat 10am-5pm

Sun 10am-4pm

Bank Holidays 10am-5pm
(except schools holidays)



Contact Museums Sheffield

Call 0114 278 2600 or email
info@museums-sheffield.org.uk

This leaflet is available in large type format – please call us to request a copy or ask at our museums.

Join our Friends

Support our work across the city by becoming a Friend and receive invitations to exclusive events and discounts in our shops and cafés. For more info call the Friends office on 0114 278 2610.

Hire our spaces

Our flexible spaces provide a unique setting for your event or celebration.

To find out more, call 0114 278 2715

or email museumsheffield@baxterstorey.com

Principal funders

Museums Sheffield thanks our major funders Sheffield City Council and Arts Council England.

Partners

V&A have been working in partnership with Museums Sheffield since 1999.

We support

Our Favourite Places, Sheffield's Culture Guide.
ourfaveplaces.co.uk

**Help keep our museums
and galleries free and open
for everyone to enjoy.
Text SHEF003 to 70970
to donate £5 today.**

Museums Sheffield is a registered charity
no.1068850

Find us on:



Cover image:

Julia Margaret Cameron, Mountain
Nymph, Sweet Liberty, 1866. Image
© National Portrait Gallery